

FEATURES



USED BY:

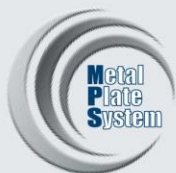
- SHIPYARDS
- STEEL PLANTS
- MILITARY
- MANUFACTURERS OF:
 - TRAILERS
 - ENGINES
 - ELECTRICAL APPLIANCES
 - CUSTOM VEHICLES
 - MACHINERY

IDEAL FOR:

- MANUAL PERSONALIZATION OF METAL PLATES IN ALL ENVIRONMENTS

NO POWER SUPPLY REQUIRED

TOTALLY PORTABLE



MANUAL SERIES

M10 HE



EMBOSSING OR DEBOSSING
PORTABLE, ROBUST AND COMPACT FOR
DOG TAG AND METAL PLATE MARKING

Embossing type set

Block 5 mm



Simplex 2



Block USA



Debossing type set

Block USA

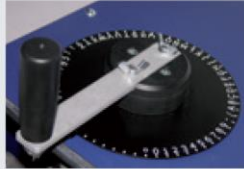
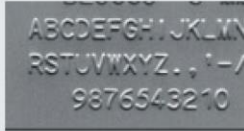


SINGAPORE:
VICCARD PTE LTD
Email viccard@singnet.com.sg | Tel: 65-6288 1801
www.viccard.com.sg

MALAYSIA
VICCARD M SDN BHD
Email sales@viccard.com.my | Tel: 603-7960 7932
www.viccard.com.my

For more information, visit our website

TECHNICAL FEATURES



Character selection ring



60 characters capacity drum

HE
m10



PLATE

plate dimensions

width 12 ÷ 95 mm / 0.47 ÷ 3,74 in
height 12 ÷ 75 mm / 0.47 ÷ 2,95 in
thickness 0,4 ÷ 0,9 mm / 0.0157 ÷ 0,0354 in

plate materials feed

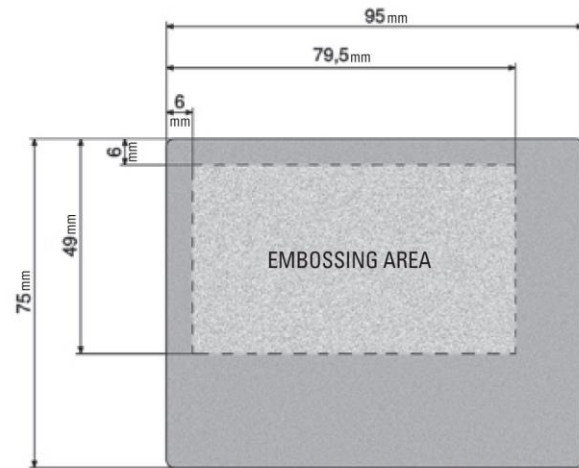
stainless steel, carbon steel, aluminum, copper, brass
manual

EMBOSSING

technology drum capacity type set

Embossing or debossing
60 slots
many characters configurations available:
Embossing: Simplex 2, OCRB1, Block USA, Block 5 mm - others available on request
Debossing: Elite Dog Tag

embossing area*



*Measurements are taken from the base and left side of the character.

HARDWARE

dimensions (WxDxH)

250 x 440 x 260 mm / 9.8 x 17.3 x 10.2 in

weight

13 kg/ 28 lbs

Portable, yet robust and compact. The **M10 HE** is entirely manual and can be used anytime, anywhere.

No power supply required.

With its 60 characters capacity drum, the automatic spacing function and the whole plate free format, the **M10 HE** is designed to meet a wide range of requirements and is ideal for the personalization of low to medium tag volumes.