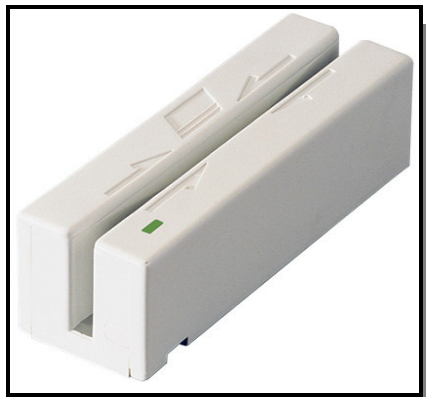


READERS & SCANNERS



Partnership in card solutions

KEYBOARD EMULATION TYPE MAGNETIC STRIPE READERS, BARCODE SCANNERS AND STAND ALONE MAGSTRIPE READER/WRITER. FOR SIMPLE, QUICK & EASY ENCODING & CHECKING



Model: MSR 210
Mini-swipe magnetic stripe reader, keyboard emulation

Powered by USB (No external power supply required)
Dual and Three track capability
Bi-directional read capability
Reads encoded cards that meet ISO, ANSI, and AAMVA standards
Includes USB interface
Dual color LED

Dimensions

Height: 1.23 in (31mm)
Width: 1.28 in (32mm)
Length: 3.94 in (100mm)



Model: MSR 206
Wedge swipe reader / encoder with software

Magnetic card reader/encoder for HICO/LOCO 3 track
RS232 interface.

Read/write magnetic stripe cards conform to ISO 7811/1-6
Read/write triple track
Variable coercivity (300-4000 oe)
Programmable data format
Media thickness 0.76 mm ~ 1.2 mm
CE, FCC, UL certified
Color pearl white

Dimensions:

L= 210mm, W=65mm,H=60mm



Model: Quick Scan 1000
Hand held barcode scanner with stand. Keyboard emulation

Light source: Visible Laser Diode(VLD)
Scan system: Electromagnetic dithering mirror
Rates: 42 scans/sec (nominal)

Decoding capabilities:

UPC A, EAN 8, EAN13, EAN 128
Code 39, Code 128, Code 93, Codabar, 2of 5 interleave

Dimensions:

22cm x 7cm x 5.5 cm x 176grams



VICCARD PTE LTD
1020 Tai Seng Avenue #03-3500,
Singapore 534416
Tel: (65) 6288 1801
Fax: (65) 6288 1802
Email: viccard@singnet.com.sg

VICCARD (M) SDN BHD
Unit A-3-11, 8 Avenue, Jalan 8/1, Seksyen 8
46050 Petaling Jaya, Selangor, Malaysia
Tel: (603) 7960 7932 / 7954 7932
Fax: (603) 7960 0932
Email: viccard@po.jaring.my

www.viccard.com.sg