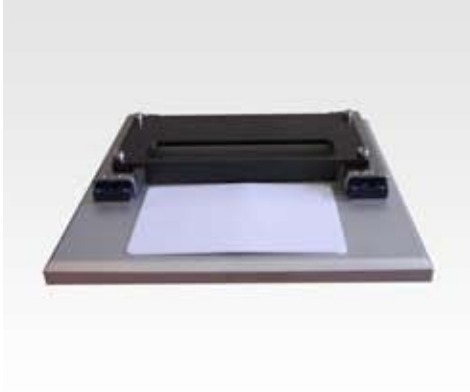


MODEL : Mechanical Card Test Tools

Mechanical Quality Control Test Tools For Cards



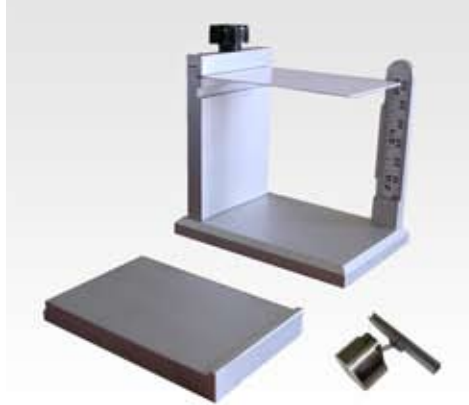
Warpage Test

This test tool checks the warpage of a card after production. (Test for plastic card, chip card, magstripe card and RFID card etc).

Test height : 1.5mm (Option 1.98mm)

Technical Specifications

Size : 140mm x 170mm x 40mm x 0.9 kg



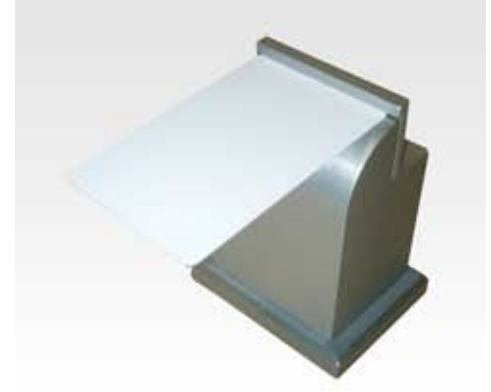
Bending Stiffness Test

This tool checks the stiffness of ID1 card bodies. (Test for plastic card, chip card, magstripe card and RFID card etc).

Force Applied : 0.7N (Other weight optional)

Technical Specifications

Size : 150mm x 150mm x 120mm x 1.5 kg



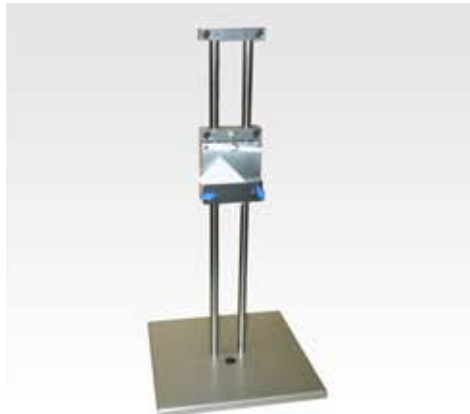
Wrapping Test

The wrapping tool is a CQM test tool to check the chip adhesive resistance on ID1 card bodies (contact chip on chip card, magstripe card and RFID card etc)

Radius Test : 20mm and 25mm

Technical Specifications

Size : 690mm x 580mm x 560mm x 46 kg



Impact Corner Test

The impact corner test tool is a CQM card test tool to comply with ANSI INCIT 322-2008 para 5-20 standards.

The tool test resistance to impact corner for different layers of ID1 card bodies. (Test for plastic card, chip card, magstripe card and RFID card etc).

Option : Extra weight to test higher than ISO/ANSI standards

Technical Specifications

Size : 300mm x 300mm x 600mm x 7.35 kg
Conform to CE directives



Ball Impact Resistance Test

The Ball Impact Resistance Test tool is a CQM card test tool to comply with ANSI INCIT 322-2008 para 5-20 standards.

The tool test resistance to ball impact on ID1 card bodies. (Test for plastic card, chip card, magstripe card and RFID card etc).

Drop height : up to 380mm (15 inches)
Impact weight : 18N (4 lbs)

Option : Extra weight to test higher than ISO/ANSI standards

Technical Specifications

Size : 250mm x 250mm x 570mm x 9.25 kg
Conform to CE directives



Desktop Peel Strength Card Test Device

The peel strength card test machine follows the ANSI standards ANSI INCITS 322-2008 para 5 specifications. It realised the resistance test of the card's overlay film on ID1 card bodies (Test for plastic cards, magstripe, chip cards, RFID cards etc). It is simple and easy to use with touch screen interface and graphic images for test measurements.

Technical Specifications

Size : 210mm x 260mm x 480mm x 15.9 kg
Power : 100-240 V AC / 50-60 Hz Single Phase 3.15A
Output : 1000 units per hr depending on operator
Agency standard : ISO7810 / ISO10373
CE directives



Card Solutions For A Better World

Singapore

Viccard Pte Ltd Blk 1020 Tai Seng Ave, #03-3500, Singapore 534416
Tel : (65) 6288 1801 Fax : (65) 6288 1802 Email : viccard@singnet.com.sg Website : www.viccard.com.sg

Malaysia

Viccard (M) Sdn Bhd Unit A-3-11, 8 Ave, Jln 8/1, Seksyen 8, 46050 Petaling Jaya, Selangor, Malaysia
Tel : (603) 7960 7932 Fax : (603) 7960 0932 Email : viccard@po.jaring.my Website : www.viccard.com.my

www.viccard.com.sg